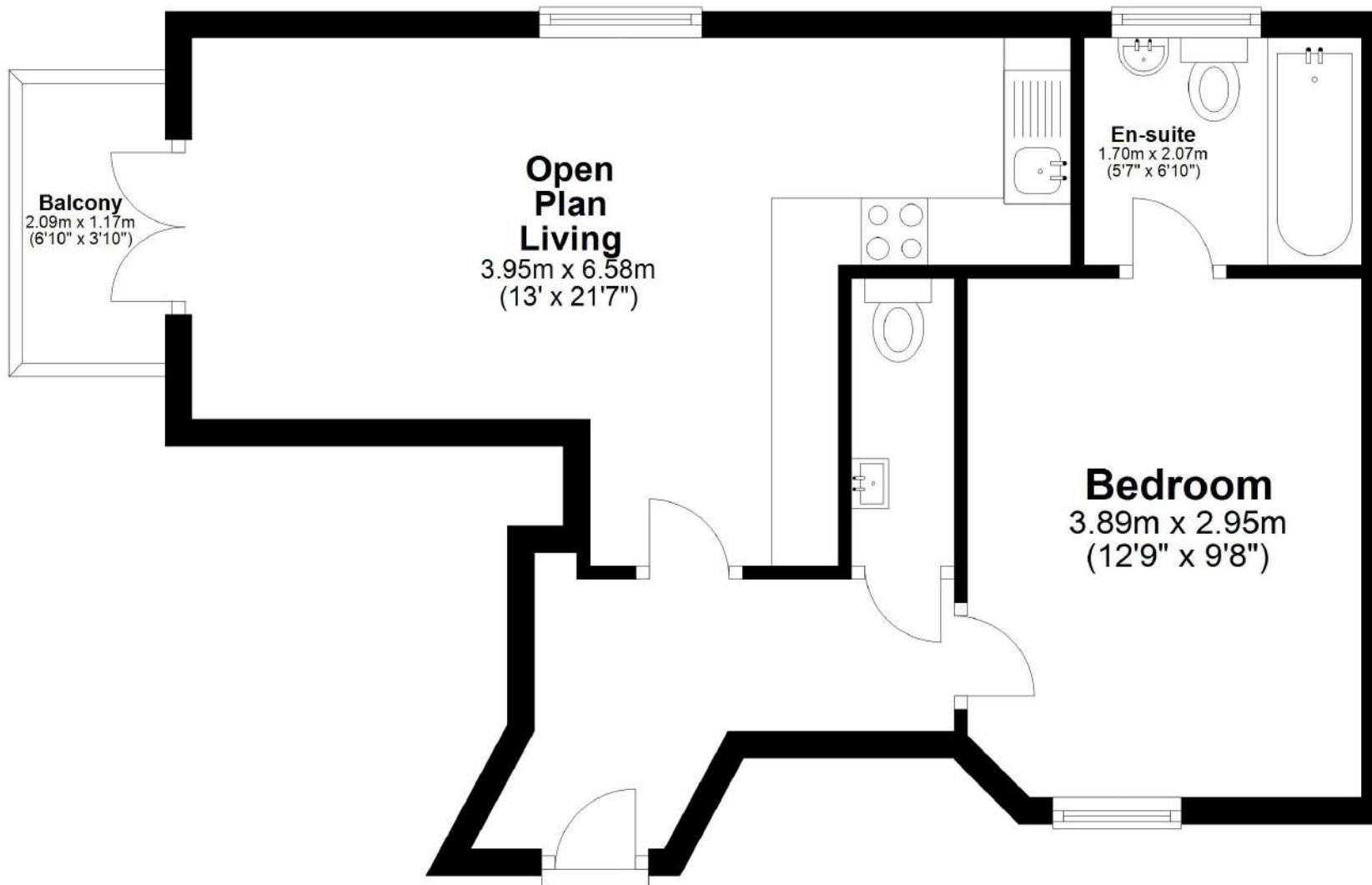


# Sixth Floor

Main area: approx. 41.6 sq. metres (448.2 sq. feet)

Plus balconies, approx. 2.4 sq. metres (26.4 sq. feet)



Main area: Approx. 41.6 sq. metres (448.2 sq. feet)

Plus balconies, approx. 2.4 sq. metres (26.4 sq. feet)

Floor Plan measurements are approximate and are for illustrative purposes only. While we do not doubt the floor plans accuracy, we make no guarantee,  
Plan produced using PlanUp.