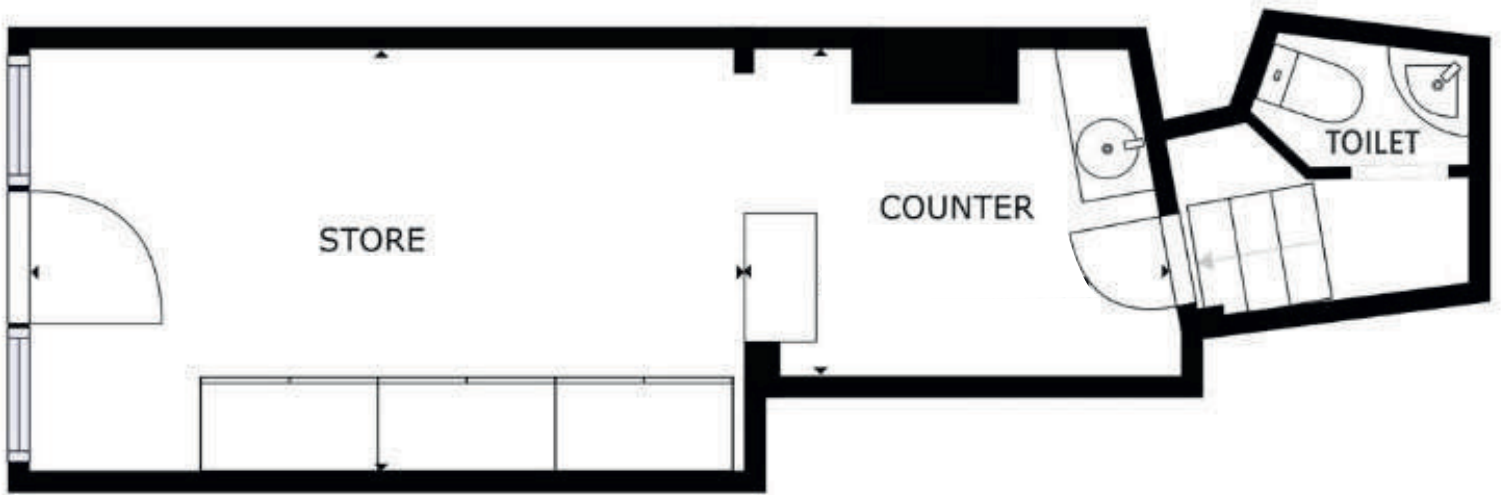


69 Askew Road, London W12

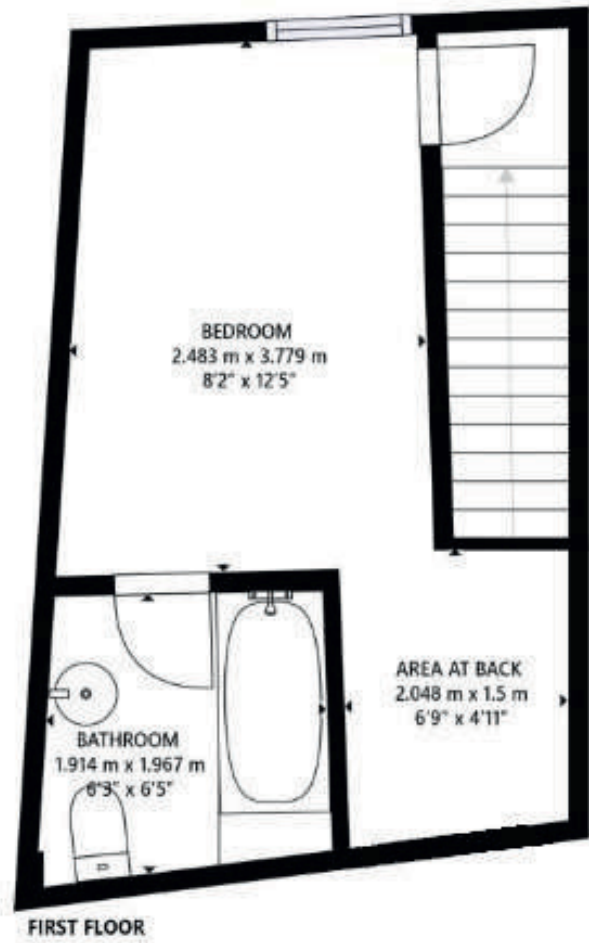
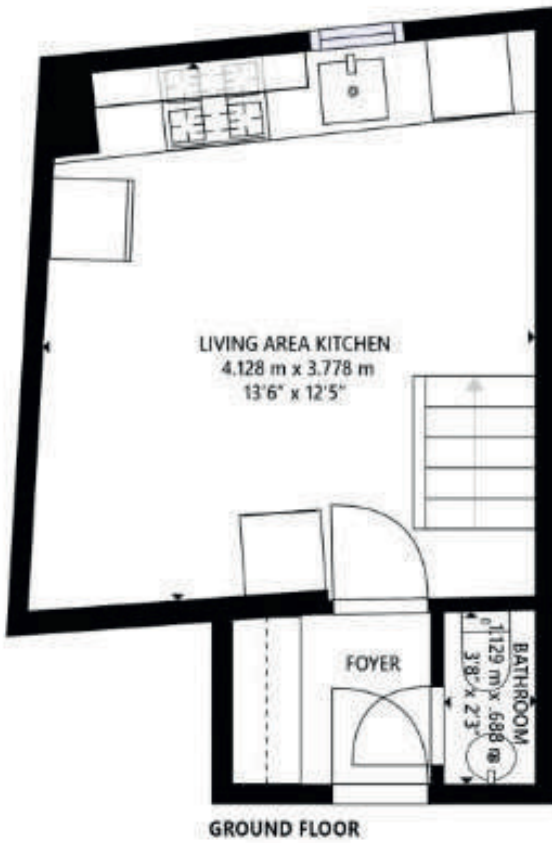
Plans not to scale and for identification purposes only.



GROUND FLOOR

69 Askew Road, London W12

Plans not to scale and for identification purposes only.



GROSS INTERNAL AREA
GROUND FLOOR: 183 sq ft, 17 m², FIRST FLOOR: 236 sq ft, 22 m²
TOTAL: 419 sq ft, 39 m²

69 Askew Road, London W12

Plans not to scale and for identification purposes only.



FIRST FLOOR FRONT



SECOND FLOOR FRONT

GROSS INTERNAL AREA

FIRST FLOOR: 262 sq ft, 24m², SECOND FLOOR: 306 sq ft, 28 m²

TOTAL: 568 sq ft, 53 m²

69 Askew Road, London W12

Plans not to scale and for identification purposes only.



GROSS INTERNAL AREA
SECOND FLOOR: 26 sq ft, 2m², THIRD FLOOR: 330 sq ft, 31 m²
TOTAL: 356 sq ft, 33 m²